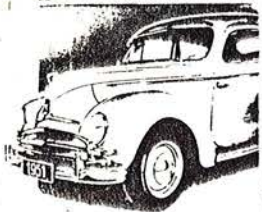


De TAUNUS 1951



January '93

# TAUNUS TALK



MONTHLY CLUB MAGAZINE

1965 cars



**Taunus 20M** with V-6 engine



Taunus Team

Neil R Dashper	Club President Spares Department	15 Redworth HS Deelands Rd Rubery B'Ham B45 9RT Tel: 021 457 8660 or (0384) 392192
Helaena Massey	Club News Editor/Clerical Secretary	(As Above)
John Winch	Club Representative South of England	25 Cornfield Terrace St Leonards On Sea East Sussex TN37 6JD
Detlef Reuter	Club Representative Germany	Mausfpad 183 - 5000 Köln 91 West Germany

Club Rules

1. August 1st each year will be the date set to pay the annual club membership fee of £10.00. For new members joining throughout the year, the fee will be reduced depending on what time of year they join. This will be done quarterly, so the fee will be reduced from £10.00 - £7.50 - £5.00 - £2.50 and then back to £10.00 the following August; thus meaning everybody pays for their full one year membership at the same time. (Overseas membership fees will differ slightly to cover postal costs).
2. Member's addresses and phone numbers will be kept on file and will not be disclosed to any person or source without member's consent.
3. If membership is not renewed, you will be unable to obtain any club information, parts, advice or any other service available from the club.
4. Anybody under the age of 16 Or any person who runs an automobile club and exchanges club magazines / newsletters can join the club free of charge.
5. All classified advertising in the newsletter is free of charge to club members.
6. The club is open to all makes of Taunus or anybody who has an interest in Taunus's (Or Taunii - whatever it might be).

I hope these club rules meet to everybody's approval,

Club President



Neil Dashper

## Club News

Happy New Year To You All!!!

We hope everyone had a good Christmas with lots of pressies. We spent most of it eating, sleeping and getting fat, (like most people probably). Thanks to those of you who sent us Christmas Cards, among whom was Clarke Jones - glad to know you're still alive Clarke. Thanks for the card - it had us in stitches. Anyway, he'll probably have some good news about the club stickers in the next month or so; (after he's recovered from all that alcohol over Christmas). Also Clarke, I can get you a genuine brand new Ford Cortina (Mk3) front left hand wing for £40. If you want it let me know A.S.A.P. o.k.

The parts from Vang, (sills and wheel arch repair kits), have arrived and are now in my possession. (Those of you who have ordered things will probably be contacted before you receive this mag.). John Hopkins fetched the parts and brought them up to mine. He also paid the total bill up front out of his own pocket, so I would like to emphasize to those members who ordered parts to send their cheques to me, (MADE PAYABLE TO JOHN HOPKINS), A.S.A.P, so I can pass them on to John. Thanks. Unfortunately, the carriage costs for the parts was a bit more expensive than we anticipated so sorry about that - they were heavy! Also, Vang sent extra parts which we didn't order due to bad communication on Vangs side. The parts are unreturnable because they were a special bulk order from overseas and the costs of returning any goods just wouldn't be worth it. So to help John out, I have reimbursed John for these parts with my own money and have kept them for stock even though we didn't want them. I think we definitely owe John a big thank you for all the hard work he's done by getting members and the club these parts from overseas. Thanks John.

I received a letter in December from a guy in Germany called Horst Leyer who knows Detlef. He has a lot of Taunus parts for which he's sent me his parts lists. He is also looking for Taunus parts for P2's and P3's. I phoned him up and we had a



Taunus 17M (P 5, links)  
und 20M (P 5, rechts) sind  
optisch kaum zu unter-  
scheiden.



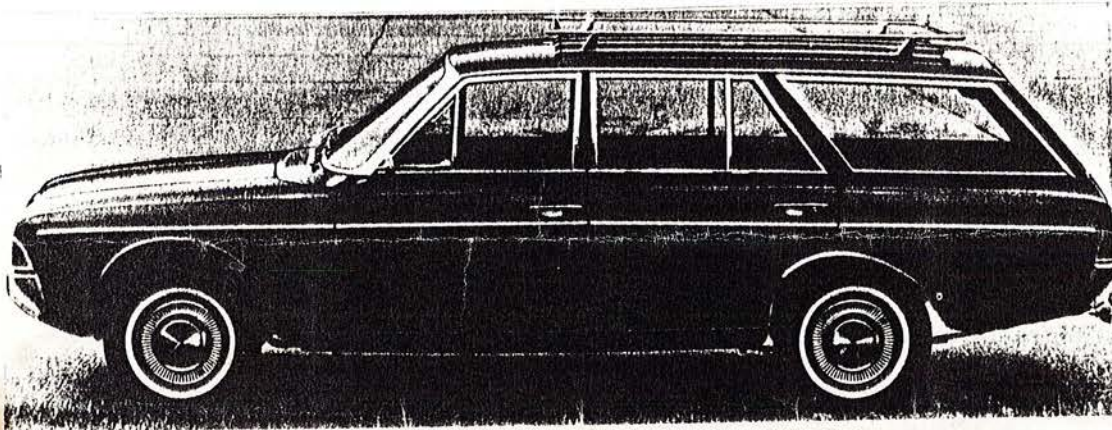
REAR WING REP. PANELS.

MERC ESTATE UP TO 1980 OK  
VOLVO " UP TO 1979.

good chat, and hopefully when I've finished sorting out the Winterstoke parts, we can do a swap for his P5/p7 parts for club members and club stock. (Hopefully this will save money). I've done a list of what I've sorted through from Winterstoke, (see parts page), but there's still plenty of boxes to go through yet.

Gordon, the main Taunus parts man at Ford Bristol Street, B'Ham, has now retired. He has let me have what parts Bristol Street had left in stock and has also given me the parts slides for the I2m, I5m, I7m, 20m and Taunus TC/I Mk3 Cortina Shape, (which I will look at as soon as I can get my hands on a projector!). I have asked Gordon if he would like to join the club as an honorary member. It would be ashame to lose someone with such experience and knowledge of Taunus parts. Gordon has been dealing with Taunus's at Ford for more than twenty years and has been a great help to club members and to the club. I hope he'll now enjoy participating as a club member.

We hope to get a few local members together with Gordon for some photos, and do a write up on him for next month. So look out for it.



TAUNUS.  
P5  
I7M  
TURNIER.

The club has also had another new member - a young lad from Harbourne, B'Ham, who's inherited his Grandfather's 1973 Taunus TC/I GXL (Mk3 Cortina Shape). The car has come from Switzerland and is a 2 litre V6, 2 door saloon.

I've been in touch with Your Classic magazine and hopefully the club will be in the club directory for March.

That's about it for this month, (some people still work during their holiday - even if the mag. is slightly late - it was too much turkey!).

Wishing a happy & successful New Year to everyone,

*Lee & Koraene.*

Taunus Parts (box 4/4b)

P2

Quantity

Bracket (steering/engine mount)	1
Speedo Cable	1
Clutch slave cylinder(R.H.D)	1
Speedo cable	1
Insulator (rear engine support)	2
Carb repair kit	1
Brake hose front	1
Valves (heater control(water)	2
Mirrors (door)	2
Door handle (front L.H.)	1
Clip assy front bumper	2
Nuckle joint (front suspension/steering)	3
Oil seal retainer (front)	4
Front wheel bearing (inner)	4
Oil seal cup (front wheel bearing)	4
Oil seal front wheel bearing (outer)	4
Rear wheel cylinder cup	8
Pawl assy (parking brake handle R.H.D)	2

P2/3

(Box 4/b/c)

Quantity

Bearing (top of steering colum)	1
Flang (exhaust down pipe)	2
Extension (exhaust down pipe)	2
Diaphram (carb accelerator pump)	1
Bearing (ball) groove (gearbox shaft F)	1
Set of exhaust valves S.T.D	1 box
Bearing (camshaft centre S.T.D)	1
Starter motor solenoid (trip switch)	1
Elmerment (cigar lighter)	2
Gasket pad (cylinder block - fuel)	1



5 = MONTH OF PRODUCTION

	Jan.	Febr.	March	April	May	June	July	Aug.	Sept.	Oct.	Nov.	Dec.
1965, 1969 etc.	J	U	M	P	B	R	A	G	C	K	D	E
1966, 1970 etc.	L	Y	S	T	J	U	M	P	B	R	A	G
1967, 1971 etc.	C	K	D	E	L	Y	S	T	J	U	M	P
1968, 1972 etc.	B	R	A	G	C	K	D	E	L	Y	S	T

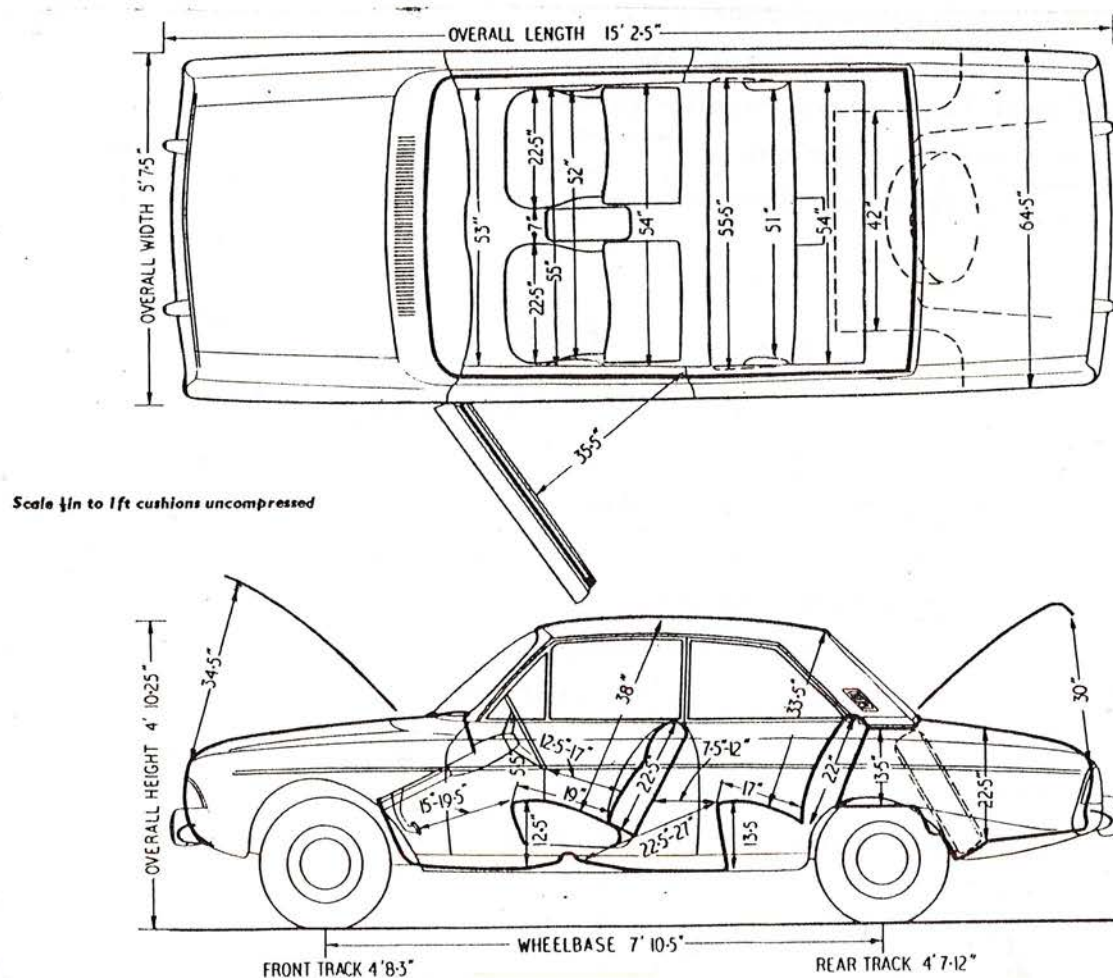
6 = SEQUENCE NUMBER

always a 5-digit number that is allotted consecutively from 10001 thru 99999

Note:

From the following Chassis Nos. you can see exactly when facelift changes became effective in production.

1967	P5/P7	Chassis No.	GL 47847
1968	Facelift P7	Chassis No.	HE 75228



Please note the above Identification plate is for the P5 - P7a - P7b. These may vary for certain models. If any body wishes to have the right copy for their Taunus let me know and send you one.

Adapter (bottom of distributor shaft)	1
Rear lens RH (estate)	2
" " LH "	1
Starter solonide 6volt	1
Distributor base plates	4
Valume & addvance unit (distributor)	2
Caliper repair kit	2
Brake master repair kit	2
Rear lens + crome surround	2
Brake master repair kit	1
Temperature gauge	1
Roller (gearbox main drive gear pilot)	2
Brake master repair kit	1
Carb diaphragm	2
Headlamp relay 6 volt	3
Ball joint kits	1
Clutch release bearing	1
Bearing top suspension leg	1
Padel rubbers	2
Engine mount (big cotton wheel)	2
Throttle padel	1
Relay (indicator 6v /2x 15w - 2x 18w)	1
Bracket - accelerator padel	1
Rear wheel cylinder (17.46mm)	2
Fuel pump	1
Bush kit (stabilizer bar to track control arm)	1
Petrol locking cap	2
Headlamp reflector (bosh)	2
Water pump seal	6
Inner halfshaft oil seal (diff)	1
thrust plate	1
Front wheel cylinder (RH)	2
" " " (LH)	1
Rear " " (19.05mm)	1
" " " (20.64mm)	1
Indicator lens (RH) front	1
Relay 6 volt	8
Lock valve spring retainer	1
Brake plate carrier front (RH)	2
" " " " (LH)	

(box 4c)

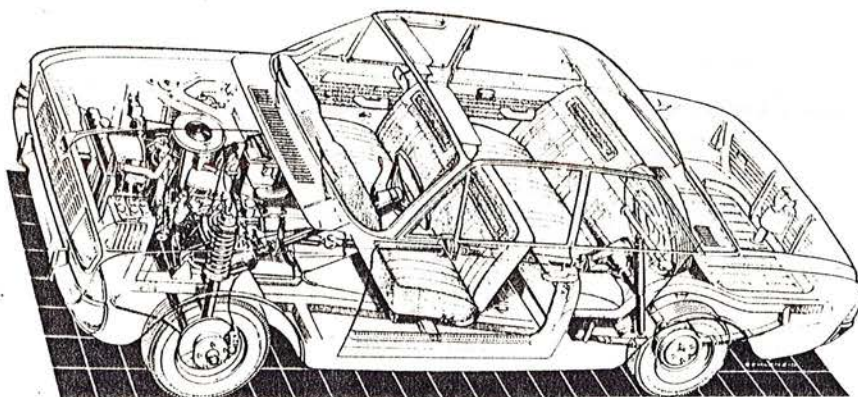
(box 4c)

"

(box 4c)

(box 4c)

Rear brake plate carrier (RH)		2
$\frac{1}{4}$ light catch (RH)		2
" " " (LH)		1
Window regulator front door (LH)		1
" " Rear " (RH)		1
" " " " (LH)		1
Gasket - Headlamp bezel		1
Lock assy (RH)	(box 4c)	1
" " (LH)	"	1
Dove tail (striker plate) Estate rear door	"	4
Arm & pivot shaft (wiper motor)		1
Wiper arms (silver)		3
Door handle (window regulator)		3
Rear door handle (LH)		1
Weatherstrip (tail gate belt)		2
Heater cable (1135 mm)		1
Bracket & shaft (LH)		1
Handle (tail gate window regulator)		1
Lock barrel & keys (glove box)	(box 4c)	1
$\frac{1}{4}$ light front window rubber (RH)		1
" " " " " (LH)		1
Wiper blades	(packets)	3
" arm		1
Key blank (SW)		4
" " (X)		4
" " (Vachette)	(box 4c)	4
Mirror glass (replacement kit)	" "	2



Die »Linie der Vernunft«  
wird kreiert: Die neuen  
Taunus-Modelle erhalten  
als 17M bzw. 20M die glei-  
che, »schlichte« Karos-  
serie (1964-1967).



Cars For Sale

1971 Taunus P7 20MRS 2.3 V6 2 Door coupe (Twin Headlamps) R.H.D.  
Excellent condition New respray Alloy wheels 98% complete Excellent engine and  
box Good Runner Very Rare Car £1200.00 No offers  
Phone John Perkins 021 559 2943 (Day Only)

1968 Taunus P7 20MTS 2.3 V6 4 Door Saloon L.H.D. New clutch New alternator  
Cherry bomb exhaust Solid clean tidy car Good engine and box Very reliable  
M.O.T. June '93 TAX March '93 Needs minor cosmetics Oldest P7 in the country  
New Taunus forces sale £ 500.00 No offers  
P/x Considered  
Phone Neil 021 457 8660 or (0384) 392192

1971 Taunus P7 17MRS 1.8 V6 2 Door Coupe L.H.D. Excellent condition inside  
and out Lots of money and work spent on it One owner from new Long M.O.T. & TAX  
£1495.00 O.N.O. Phone Shaun (0831) 361193 Day only

1969 Taunus P6 17MXL 1.7 V4 2 Door Coupe R.H.D. Excellent condition inside  
and out Silver with black interior Excellent mechanics Low mileage One owner  
from new Long M.O.T. Very rare car  
£ 800.00 No offers Phone Roger (0702) 230459

1969 Taunus p6 15M 1.5 V4 2 Door Saloon L.H.D. Grey with red interior  
Very good condition Long M.O.T. and TAX Very rare car  
£ 800.00 Phone Tom 061 872 8630

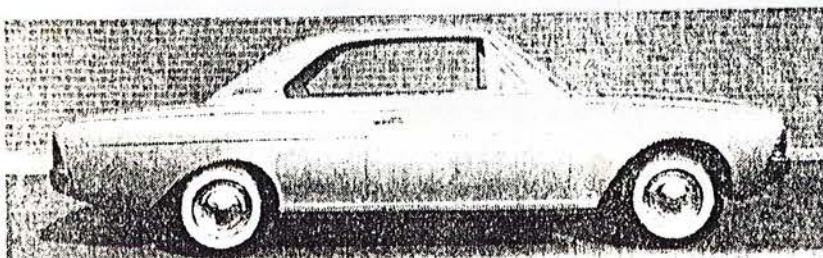
1960 Taunus P3 17MTS 1.7 Straight 4 4 Door Saloon L.H.D. Needs total  
restoration £ 200.00 No offers Phone Mr Stuart Roberts (0227) 375994

wanted....Wanted....Wanted....Wanted

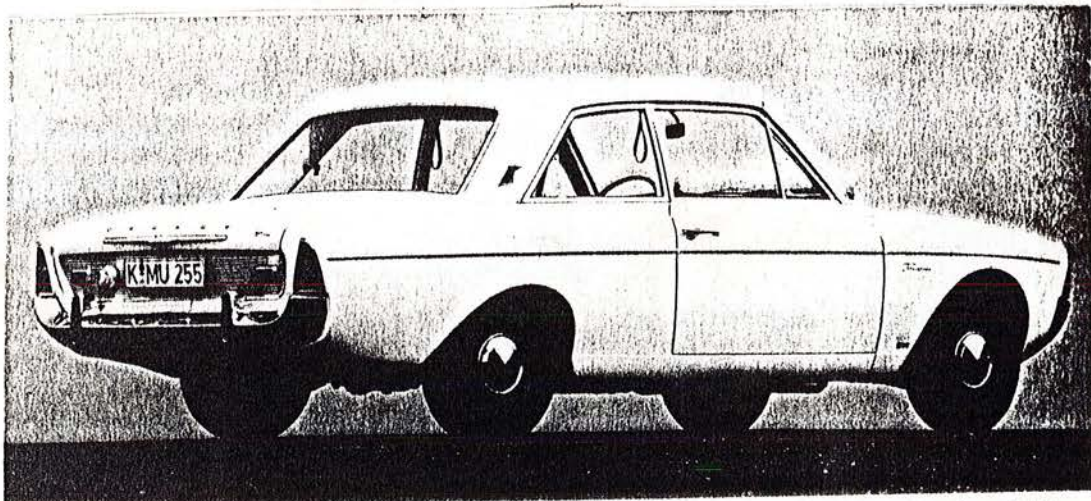
Bills for P6 15M Coupe - Phone Tom 061 872 8630

Left hand wing for Taunus TC/I (Mk3 Cortina Shape) - Phone Mark 021 742 1504

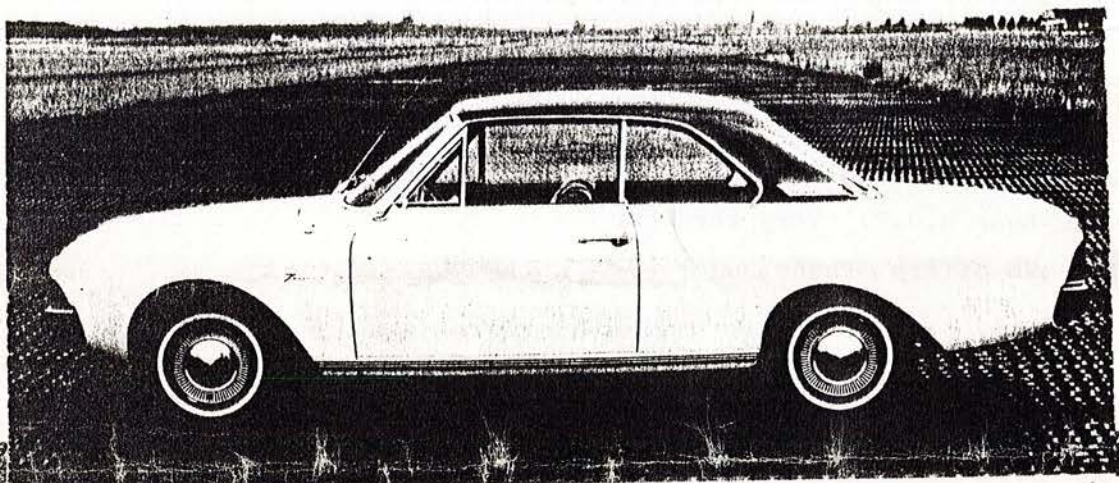
Left hand indicator lens for Taunus TC/I (Mk3 Cortina Shape) - Phone Jason  
021 427 7175







... zweitüriger Taunus 20M, jeweils ausgerüstet mit dem neuen V6-Motor, der mit 2-l-Hubraum in der normalen Limousine 85 PS leistet.



Das 20M-Hardtop-Coupé hat eine elegante, niedrige Dachsilhouette mit recht ausgewogenen Proportionen (1964–1967).

